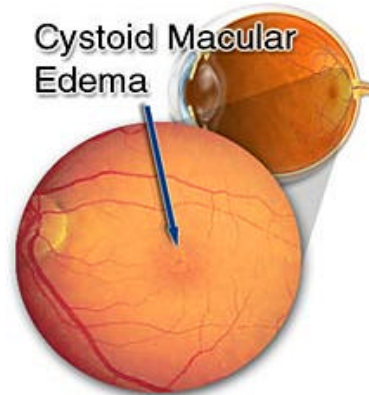


# Cystoid Macular Edema

## Description

**Cystoid macular edema (CME)**, or swelling of the **macula**, typically occurs as a result of disease, injury or more rarely, eye surgery. Fluid collects within the layers of the macula, causing blurred, distorted central vision. CME rarely causes a permanent loss of vision, but the recovery is often a slow, gradual process. The majority of patients recover in 2 to 15 months.



In this retinal photograph, the swelling is the yellowish spots (arrow) in the macula.

## Signs and Symptoms

- Blurred central vision
- Distorted vision (straight lines may appear wavy)
- Vision is tinted pink
- Light sensitivity

## Detection and Diagnosis

It is very difficult to detect CME during a routine examination. A diagnosis is often based on the patient's symptoms and a special dye test called a **fluorescein angiogram (FA)**.

## Suggested Treatments

The first line of treatment for CME is usually anti-inflammatory drops. In certain cases, medication is injected near the back of the eye for a more concentrated effect. Oral medications are sometimes prescribed to reduce the swelling.